

REV.: 0.0

DATE:

REV. BY:

DRN. BY: J. Templin

CHECK: J. Evans

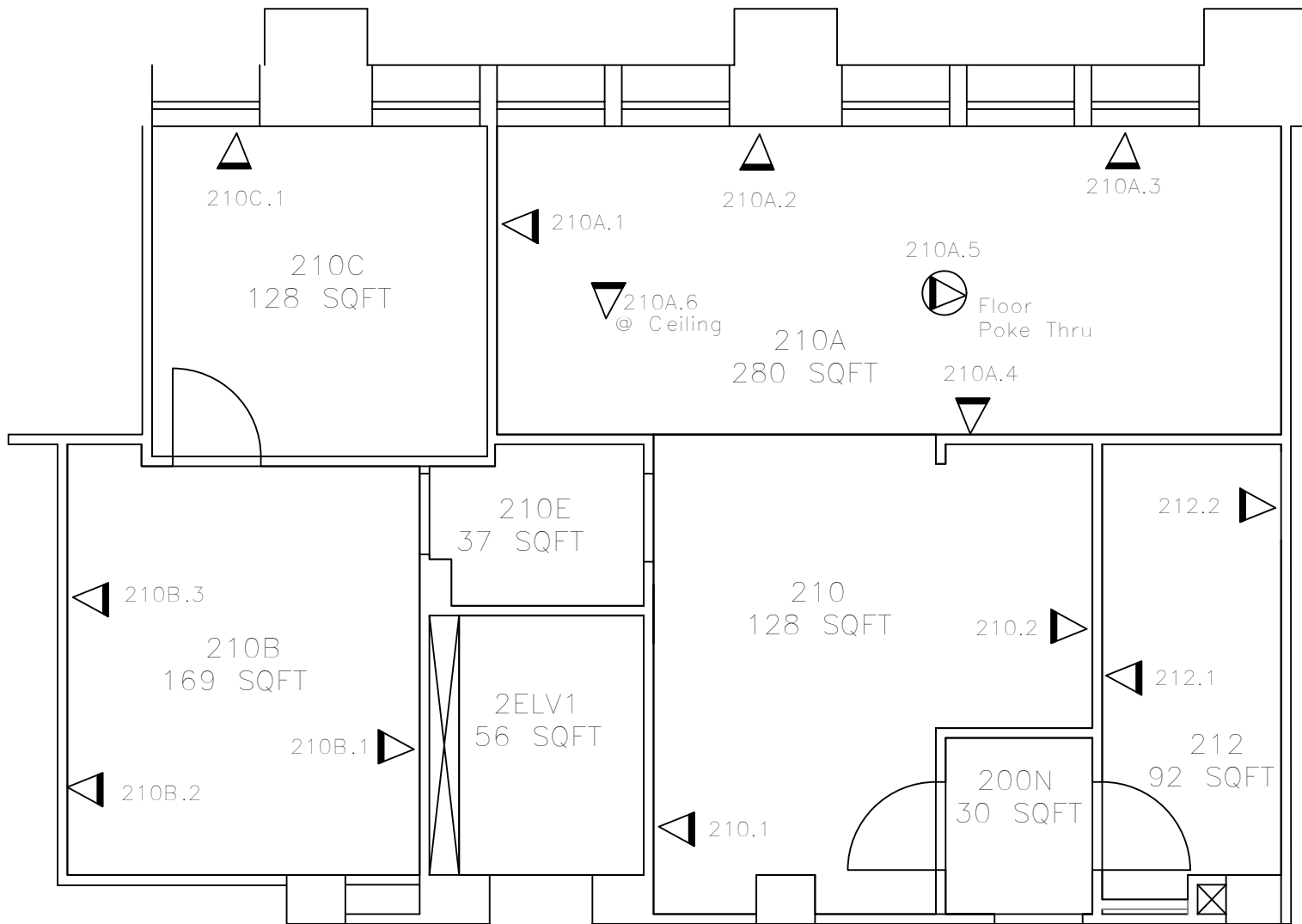
APPR: L. Zimmerman

DATE: 05/28/14

SCALE:
NTS

CAD NAME:
RM-LB-1

DWG. NO.:
LB-CI-4



When Labeling outlets in rooms... label outlets starting on the left as you enter the room main entry XXX.1 ... XXX.2

Exception: When labeling outlets are in an existing building with an established scheme, follow the existing scheme.